



Romp petrol Well Services Equity Story

Servicing the Oil & Gas Industry since 1951

Romp petrol Well Services has been listed on the main market of BSE since June 18, 1998

BSE: PTR

ABOUT RWS

Company overview

Rompetrol Well Services has been listed on the main market of BSE since June 18, 1998

BSE: PTR

Company Overview

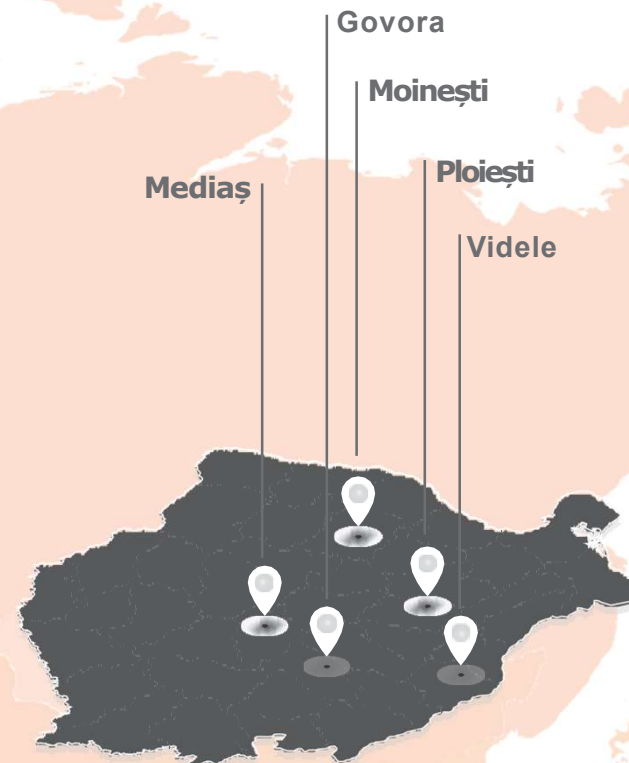
Rompetrol Well Services (RWS) is one of the leading companies on the specific market segment in Romania.

With an experience of over 70 years, RWS offers a wide range of specialized services for the oil and natural gas wells that include cementing, sand control, stimulation, slickline, nitrogen services, tubular running and tools rental.

Services are provided to oil and gas operators and drilling contractors, focusing on cementing, that represents more than 50% of company's turnover. Over the last years, the company provided its services to over 40 oil companies and drilling contractors in Romania, Eastern Europe, Kazakhstan, Iraq, Jordan and Turkey.

RWS provides the technical support and supervises all the on-going jobs for its operations in Europe and Central Asia.

The Operating Bases are fully equipped and permanently staffed with high experienced personnel, trained by European specialists.



Rompetrol Well Services

- CEMENTING
- STIMULATION
- ACIDIZING
- NITROGEN SERVICES
- MISCELLANEOUS PUMPING
- TUBULAR RUNNING
- TOOLS RENTAL

Rompetrol Well Services is looking forward to new business opportunities deriving from the consolidation of its position in Central and Eastern Europe



Excellent knowledge of the oil and gas fields specificity, achieved in over 70 years of experience



Excellent HSE Records



Broad operating basis network



Very Good Price-Quality ratio



Experienced and dedicated operating personnel

QHSE

ROMPETROL WELL SERVICES

has implemented and maintains an integrated quality management system certified according to ISO 9001, ISO 14001 and ISO 45001 standards.

All processes that have direct or indirect influence on the quality of services and company efficiency are monitored and constantly improved.



Markets & Customers

ROMANIA

- OMV-PETROM
- ROMGAZ
- PETROFAC SOLUTIONS
- PETROSANTANDER ROMANIA
- AMROMCO
- SCHLUMBERGER
- NIS NAFTOGAZ
- WINTERSHALL
- TOREADOR RESOURCES
- FOREST OIL
- TULLOW OIL
- STERLING RESOURCES
- REGAL PETROLEUM
- TACROM SERVICES
- EXPERT PETROLEUM
- AURELIAN OIL & GAS
- TRANSATLANTIC
- STRATUM ENERGY

KAZAKHSTAN

- KAZMUNAIGAZ
- BURENIE
- EQUIPMENT SERVICES
- KAZROSOIL
- STK GEO
- TASBULAT OIL CO.
- OZTURKMUNAI LLP
- PACIFICO DRILLING
- NORTH CASPIAN Co.
- SAMEK
- ALTIUS PETROLEUM
- EMBAYUGNEFT

BULGARIA

- JKX BULKAN
- DIRECT PETROLEUM
- CBM ENERGY
- TRANSATLANTIC

HUNGARY

- DOVERDRILL
- ROTAQUA
- PANNON NAFTAGAZ

IRAQ

- PETOIL
- EXPLORATION & PRODUCTION
- Casco Petroleum
- NPS BAHRAIN

TURKEY

- LOTUS PETROL
- STRATUM ENERGY

GREECE

- KAVALA OIL
- AEGEAN ENERGY

UKRAINE

- TOP OIL SERVICES

**Main
Customers**

Services Overview

Since 1951 Rompetrol Well Services (RWS) has been performing Special Services in the Romanian and abroad oil&gas industry.

Services include Cementing, Stimulation, Tubular Running, Miscellaneous Pumping.

An average of 250 casing strings and liners, in depths ranges of 500m to 4500m are cemented by RWS per year.

Stimulation services ranging from acidizing and CO2 injection to nitrogen treatments and hydraulic proppant fracs are done for more than 400 oil and gas wells yearly.

Casing and Liner running of all sizes as well as other special services are delivered to most operators and drilling companies in Romania.

The job design for above services is done in-house in close co-operation with the client. All necessary equipment, tools and chemicals are provided by RWS.



Cementing Services

Primary Cementing

Casing Cementing , Liner Cementing, Heavy and Light weight cementing applications, Multi-Stage cementing

Remedial Cementing

Well abandonment, Kick-off plugs, Lost circulation plugs, Squeeze jobs, Water shut-off, Gas shut-off, Well control

Miscellaneous Pumping

Integrity testing, Well clean, circulation, Pressure test

Romp petrol Well Services pumping equipment is designed and constructed to operate and render services under oil field conditions.

Each unit is thoroughly tested before being assigned to the field. Before each job, cement slurries or other fluids are tested in RWS own laboratory.



Cementing Services



Unit type

CUSTOMAN Truck Mounted Twin Pumping Unit

Truck Mounted SCANIA Twin Pumping Unit

C-TPM-TR 475 Trailer Mounted Twin Pumping Unit

TPU-T C-717 Truck Mounted Twin Pumping Unit

TMTP-1000 Truck Mounted Twin Pumping Unit

TPU-SP510 Truck Mounted Twin Pumping Unit

CUSTOMAN 001072 Truck Mounted Single Pumping Unit

ACF 700 – 11 DH 105 Pump Truck

Engine

2 x Deutz Engine Series TCD V8 , 560 HP each

2 x Deutz Engine Series TCD V8 , 560 HP each

2 x Caterpillar C13 diesel engine, 475 HP 2,100 RPM HP each

2 x Caterpillar C15 diesel engine, 540 HP 2,100 RPM each

2 x Deutz Diesel Engine Series 2015, 540 HP each

2 x Caterpillar 3406 diesel engine, 466 HP 2,100 RPM each

1 x Caterpillar C13 450 HP

1 x Caterpillar C15 475 HP

Triplex pump

2 x MSI Hybrid TI600, 600 BHP

2 x MSI Hybrid TI600, 600 BHP

2 x SPM TWS 600S, 600 HP

2 x SPM TWS 600S, 600 HP

2 x SPM Triplex Pump, TWS 600S, 600 HP

2 x UPETROM SP-510, 500 HP

MSI T1-600 Hybrid pump triplex 600 HP

UPETROM SP-510, 336 HP

Rated pressure

10,000 psi

10,000 psi

10,000 psi

10,000 psi

10,000 psi

15,000 psi

8,500 psi

10,000 psi

Stimulation Services

Acidizing

Acidizing stimulation, Carbonate acidizing/Acid Squeeze Treatments and CO₂ Injection

Nitrogen Services

Well liquid replacement by N₂, create under balance prior to perforation, Reservoir Stimulation, Gel Foam cleanouts, Foam cementing



Stimulation Services



Purpose

High Pressure Pumping Units

Storage Equipment

Tanks on wheels for transportation of acid

Mixing Equipment

Filtration Units

Nitrogen Equipment

Type

CMAP 8000 Acid Pump Truck Unit

Includes 8,000 liters acid tank, triplex pump, two centrifugal pumps and data acquisition system
Pump rate: 50- 1,000 l/min , maximum working pressure 10,000psi

M-PHU-600 Acid Pump Truck Unit

Equipped with triplex pump, four displacement tanks two centrifugal pumps and data acquisition system
Pump rate: 30- 600 l/min , maximum working pressure 15,000psi

Stainless Steel Tank

Mounted on Skid, capacity 22 - 25 m³ , 4 in inlet connector, 4 in outlet connector

Schrader CTA 10 Acid Tank Truck

Volume 10,000 liters, working pressure 3.0 bar

Camexip Acid Tank Truck CTA 8

Volume 8,000 liters, working pressure 3.0 bar

Centrifugal Pump Skid

Equipped with RA56 Centrifugal pump, 2,500 l/min

ACF 700 Pump Unit

with HP triplex pump and hoper jet mixer

Water Filtration Unit

Flow rate 600 liters/min, secondary filtration grade 2 μ m

180 K Nitrogen Converter

Maximum flow rate 40 Nm³/min, maximum working pressure 10,000 psi,

Nitrogen Tank Truck -Chat Ferox

Gross vessel capacity 10,000 liters max. allowable working pressure 18 bar

Tubular Running Services

Power Tongs

Driven by a hydraulic power pack, power tongs provide controlled torque onto tubing and casing threads, ensuring those threads are gas tight and withstand pressure. Mounted on the tong or at the driller's console and operated by the tong operator or driller, the TripMaster torque control system displays torque applied to the connection in "real time" through the LCD screen.

Manufacturer: McCoy, Canada

Type: FARR 13-3/8" Tong and Backup Assembly

Torque Range @ 2,500 PSI:

High Gear: 4677 ft.-lb. / 6,343 Nm Low

Gear: 25,000 ft.-lb. / 33,900 Nm Maximum

RPM at High: 46 RPM

Tension Torque Gauge - Load Cell Assembly 36" Arm,
20,000 Ft.-Lbs.

Type: Farr Model SLIM 4500 Hydraulic Tubing Tong

C/W Hydraulic Backup Torque

Range @ 2,500 PSI:

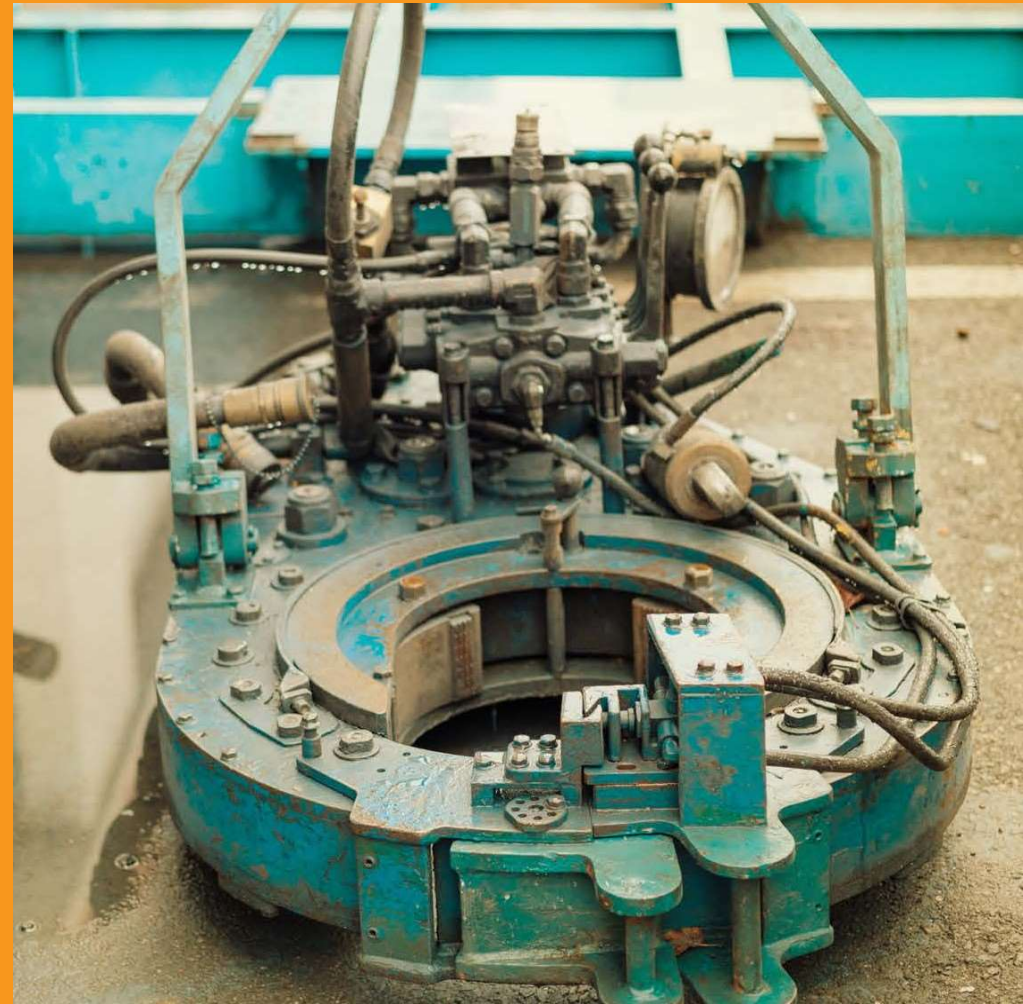
High Gear: 4,000 ft.-lb. / 5,423 Nm Low

Gear: 8,000 ft.-lb. / 10,840 Nm Torque Arm

Length: 24" / 61 cm Available Standard Jaw

Sizes:

2-3/8", 2-7/8", 3-1/2", 4-1/2", 5"



Major Achievements

High performance cementing jobs performed in the last 5 years

OPERATIONS ZONE	MAXIMUM DEPTH	MAXIMUM BOOTTOM-HOLE TEMPERATURE
1. Turburea	4900 m	140 °C
2. Târgu Jiu	5700 m	170 °C
3. Moinești - Feteasca	4965 m	125 °C
4. Pitești	5580 m	165 °C
5. Timișoara	4245 m	180 °C

COUNTRY	NUMBER OF WELLS	MAXIMUM DEPTH	BOTTOMHOLE TEMPERATURE
Romania	1050	5700 m	144 °C
Bulgaria	5	5887 m	175 °C
Iraq	4	3500 m	122 °C
Ukraine	3	5148 m	109 °C
Kazakhstan	96	3600 m	135 °C

RWS Sustainability

Performance overview

Rompetrol Well Services has been listed on the main market of BSE since June 18, 1998

BSE: PTR

Sustainability Approach



In all our operations we apply fair labor practices and abide all applicable workplace, employment, privacy and human rights legislation including support of the principles of the Universal Declaration of Human Rights.

Regarding ethics, human rights, advice-seeking and grievance mechanisms, anti-corruption/anti-bribery, risk management, we have policies in place that apply to all our employees, but also to our stakeholders.



**Code of Ethics
and Business
Conduct**



**Supplier code of
conduct**



**Anti-Bribery and
Anti-Corruption
Policy**

People & Safety



137 employees



115 male employees



22 female employees



9.13 average hours of training

per employee

1,252 hours of training provided to
129 employees



Occupational health and safety trainings are provided on a regular basis, in compliance with the applicable legislation:

- Legal requirements training (monthly)
- Professional training matrix
- Other professional trainings for job development (forklift drivers, professional drivers, IWCF, Bosiet, etc.) Annual training plan
- Road safety trainings

To improve the company's health and safety performance, specific measures were applied in 2022:

- HSE mailbox and weekly HSE reporting
- HSE management meeting
- Safety audits
- BBS
- Internal audits plan
- Incident investigation according to Romanian law
- JSA and Risk assessment for all operations
- Mandatory trainings
- Professional trainings

As part of its QHSE management system, the company provides road safety awareness campaigns, fleet GPS monitoring and defensive driving programs to ensure transport safety (indicators are reported in weekly management meetings)

Emissions

GHG Emissions

SCOPE 1	2022	2021	2020
	2,069.49 tCO2	1987.94 tCO2	1970.76 tCO2
SCOPE 2	2022	2021	2020
	62.10 tCO2	59.32 tCO2	58.28 tCO2
SCOPE 3	2022	2021	2020
	3,491.40 tCO2	3386.92 tCO2	2597.98 tCO2

GHG Emissions Intensity

2022	2021	2020
0.00010703	0.00012185	0.00009707



Reduction of GHG emissions	2022 vs 2021	2022 vs 2020
	13.85% decrease	9.31% increase

Energy & Water Consumption

Energy consumption within the organization

	2022	2021	2020
Fuels	6811.184MWh 678,855 l	6177.277MWh 615,675 l	6265.33MWh 624,451 l
Diesel for heat production installation	11,205 l	8,119 l	4,046 l
Diesel for mobility	666,039 l	605,686 l	616,960 l
Gasoline for mobility	1,611 l	1,870 l	3,444 l
Electricity	62.10 tCO ₂ e 286Mwh Emission factor 217.24 kgCO ₂ e / MWh	59.44 tCO ₂ e 274Mwh Emission factor 217.24 kgCO ₂ e / MWh	58.28 tCO ₂ e 268Mwh Emission factor 217.24 kgCO ₂ e / MWh
Natural gas combustion	137,746 m ³ 1,468 MWh Emission factor 1.9 kgCO ₂ e / m ³ 286.12 tCO ₂ e	171,770 m ³ 1,818 MWh Emission factor 1.9 kgCO ₂ e / m ³ 326.36 tCO ₂ e	150,592 m ³ 1,621 MWh Emission factor 1.9 kgCO ₂ e / m ³ 286.12 tCO ₂ e

Water consumption within the organization

	2022	2021	2020
Megaliters			
Water withdrawal	21.04	22.36	21.87
Surface water	18.03	19.68	18.30
Third-party water	3.01	2.68	3.57
Water discharge	21.001	22.340	21.86
Water consumption (ML) Water withdrawal – water discharge	0.04	0.02	0.02



Waste Management

Energy consumption within the organization

Code	Type of waste	Generated	Recycled	Eliminated
20 03 01	Mixed municipal waste	31.460	0.000	31.460
17 04 05	Iron and steel	12.400	12.400	-
12 01 01	Iron and steel filings and shavings	0.000	0.000	-
20 01 01	Paper and cardboard	0.360	0.360	-
15 01 02	Plastic packaging	10.398	10.398	-
15 01 02	Plastic (PET)	0.196	0.196	-
15 01 01	Paper and cardboard packaging	-	-	-
16 01 03	Used tires	0.002	0.000	0.002
13 02 05*	Non-chlorinated mineral oil	0.850	0.850	-
20 01 36	Electric and electronic equipment	-	-	-
07 02 99	Other unspecified waste (such as rubber)	1.400	1.400	-
10 11 03	Fiberglass	2.500	2.500	-
16 01 07	Oil filters	0.260	0.260	-
16 03 05*	Organic waste containing hazardous substances	0.840	0.840	-
20 01 21*	Fluorescent tubes	0.015	0.015	-
15 01 11*	Metal packaging waste	0.540	0.540	-
08 03 17*	Printer toner waste	0.030	0.030	-
TOTAL (tons)	-	61.251	29.789	31.462



RWS Stock & Financial Data

Q3 2023 performance overview

Rompetrol Well Services has been listed on the main market of BSE since June 18, 1998

BSE: PTR

BSE:PTR

Symbol: PTR
ISIN: ROPESAACNORO
Type: Shares
Segment: Main
Category: Standard
Status: Tradeable

ROMPETROL WELL SERVICES S.A.

0.5620

11/29/2023 5:34:35 PM

1.08% ▲

High: 0.5660

Low: 0.5520



RON

	Q3 2023	Q3 2022	Q2 2023	9 Months 2023	9 Months 2022
Operating income, of which:	19,900,459	14,963,523	19,035,698	57,236,476	38,254,905
Rendered services	19,900,459	14,920,897	18,907,790	57,100,439	38,125,889
Operating expenses	(16,478,221)	(14,052,388)	(15,129,568)	(47,643,714)	(38,847,136)
Operating result	3,422,238	911,135	3,906,130	9,592,763	(592,231)
EBITDA *)	4,904,583	2,373,269	5,539,815	14,406,821	2,719,308
Net financial income	762,611	1,288,250	722,320	2,282,036	2,226,909
NET RESULT	3,539,835	1,976,528	3,932,771	9,987,679	1,411,821

In Q3 2023, the Company managed to successfully adapt to the conditions of a volatile upstream market, maintaining its position on the specific market of well-related services. Through these elements, the volume of operations performed for our clients recorded an increase by 18% compared to the level recorded in the similar period of 2022.

Although the specific predictions for 2023 showed that the market will be still volatile, with a low level of new investments from main clients, the Company estimates that its flexibility in terms of the type of services provided, together with a strong financial position, including cash and cash equivalents, will allow the operational activity to register a profitability level similar to one estimated in the approved budget.

The Company continued to manage all its commitments in conditions of financial equilibrium, ensuring all cash availabilities for full and timely payment of commercial commitments, salaries and state budget obligations.

CG & IR Highlights

Top Shareholders

KMG INTERNATIONAL N.V.
KJK BALKAN HOLDING SARL

Other Individuals (4544)
Other Legal Persons (34)

22-Jun-23

73.0111%
10.6797%

16.1446%
0.1647%

Evolution of shareholding structure during 2022 - 2023

	30-Jun-22	6-Oct-22	31-Dec-22	18-Apr-23	22-Jun-23	Jun.2023 vs Jun.2022
Shareholders, of which:	4015	4219	4386	4519	4580	565
Individuals	3976	4180	4348	4483	4544	568
Legal Persons	39	39	38	36	36	-3

1Y Evolution of share price (RON); max: 0.6400 – min: 0.5000
Volume: 8,705,199 ; Value: 4,918,496 RON



Market cap @ 30 Sep 2023: 149,110,322 RON
Book value @ 30 Sep 2023: 100,837,429 RON
Market cap @ 30 Oct 2023: 146,328,413 RON

QHSE Highlights

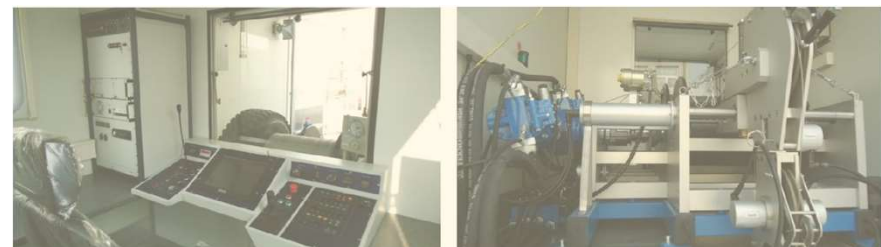


DIVISIONS	Entity	Worked Manhours	FTL	FAC	Incidents				
					MTC	RWDC	DAFWC	LTI	TRI
UPSTREAM	ROMPETROL WELL SERVICES	135,100	0	0	0	0	0	0	0

DIVISIONS	Entity	Fatal Incident Rate		Lost Time Injury Rate	Total Recordable Injury Rate
		FIR		LTIR	TRIR
UPSTREAM	ROMPETROL WELL SERVICES	0		0	0

DIVISIONS	Entity	Motor Vehicle Crash (Accident) MVC				Total MVC	Km Driven	MVC Accident Rate
		L	S	M	C			MVCR
UPSTREAM	ROMPETROL WELL SERVICES	0	0	0	0	0	1,181,674	0

DIVISIONS	Entity	Hazard Observation Card - HOC	QHSE Training Hours	Fire / Emergency drill	QHSE audits/ inspections
UPSTREAM	ROMPETROL WELL SERVICES	1354	256	8	65



1

1191 days

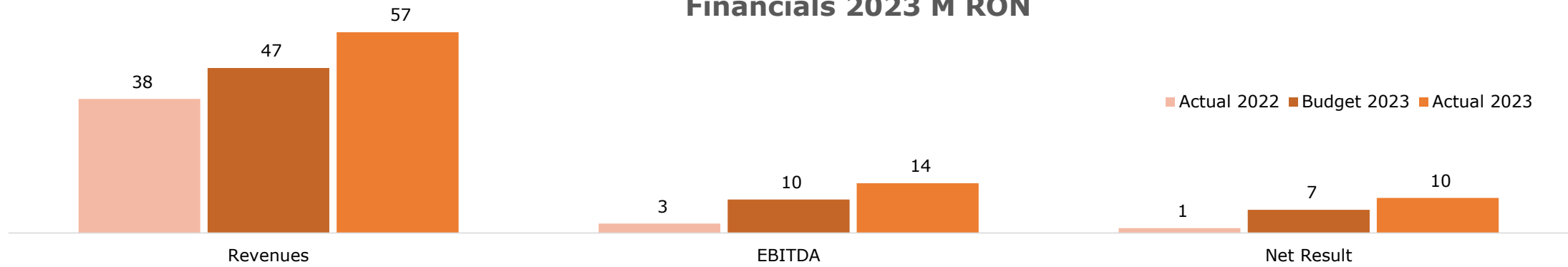
No recordable injuries

2

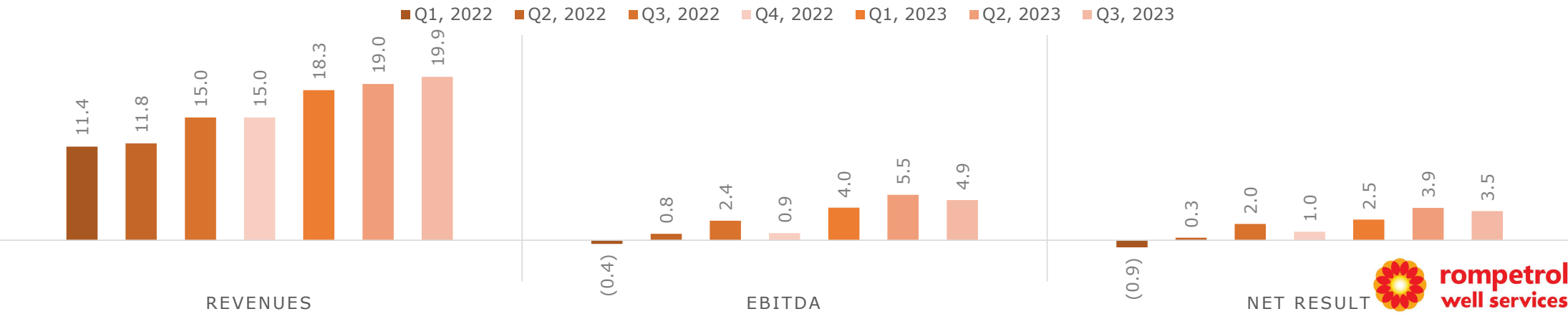
- 0 authority fines
- Maintaining all ISO certifications
- Maintaining all Environmental permits without penalties

Financial Highlights

Financials 2023 M RON



Q VS Q, M RON



Contact

Rompetrol Well Services
#2 bis, Clopoței Street Ploiești,
ROMANIA

Telefon: +40 244 544321
Fax: +40 244 522913
Sales: +40 244 402227

e-mail: office.rws@rompetrol.com
investor.relations.rws@rompetrol.com
<http://www.rompetrol.com>